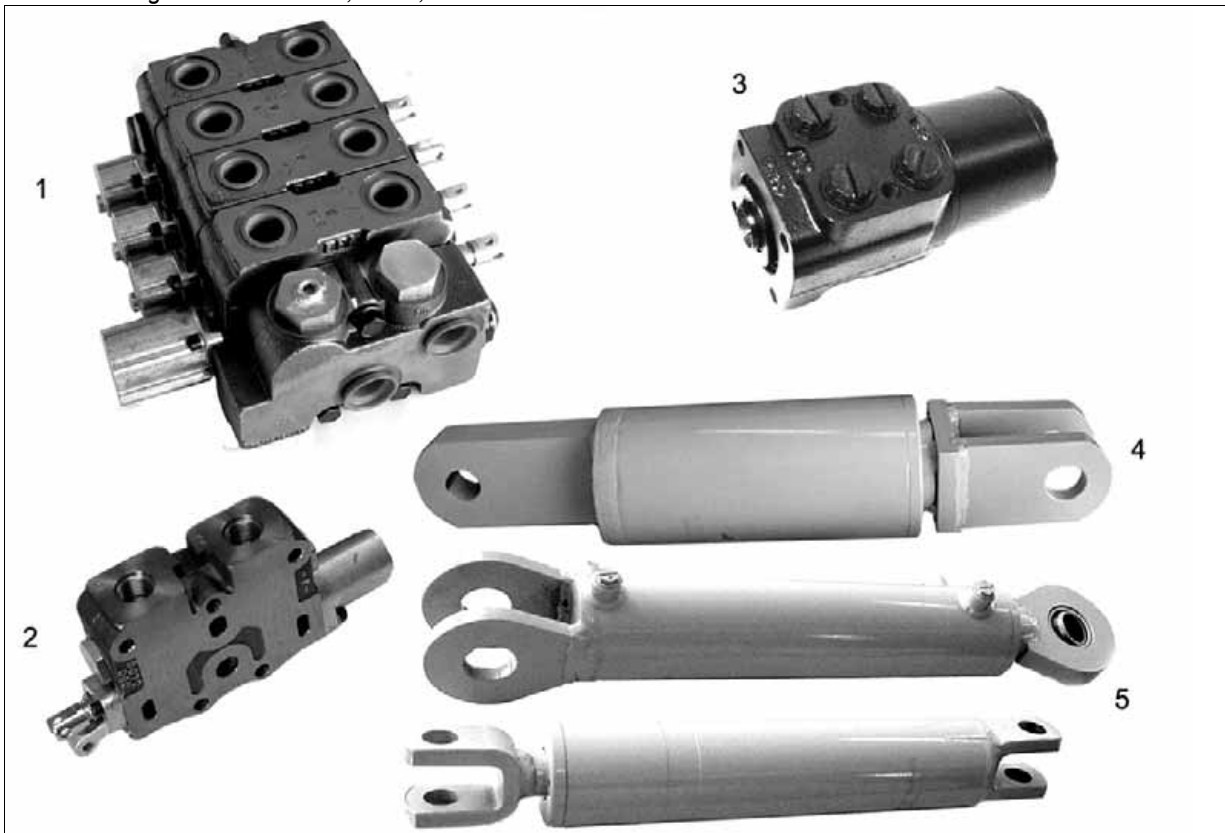


HYDRAULIC COMPONENTS

Series I through IV and IH 43XX, 45XX, & 47XX models



VIEW	PART	DESCRIPTION
	35-1059B	Kit, Valve Seal (1/valve section)
1	18-460SSB	Valve Bank Asm, Hydraulic (1 float, 1 sprng cntr)
1	50-1398SSB	Valve Bank Asm, Hydraulic (1 float, 2 sprng cntr)
1	50-1398B	Valve Bank Asm, Hydraulic (1 float, 2 w/detent)
1	50-1396B	Valve Bank Asm, Hydraulic (1 float, 3 w/detent)
1	50-1397B	Valve Bank Asm, Hydraulic (1 float, 4 w/detent)
1	50-1397SSB	Valve Bank Asm, Hydraulic (1 float, 4 w/spring center)
1	50-1396SSB	Valve Bank Asm, Hydraulic (1float, 3w/spring center)
2	50-1981MDB	Valve, Hydraulic (Manual Det)
2	50-1981SSB	Valve, Hydraulic (spring center, w/o float)
2	50-1981B	Valve, Hydraulic (w/detent)
2	50-1979B	Valve, Hydraulic (w/float)
3	146605B	Steering Control Valve
3	50-3615B	Steering Control Valve (01-9556)
3	17-7283A1B	Steering Control Valve (Series II: 18-006)
4	01-4194B	Cylinder, 3pt Lift (Large Frame Ser II/III & IV)
5	18-1148B	Cylinder Asm (2-2119; WC, BC, IH 43/45/4786, 4366, & 4568)
5	18-1147B	Cylinder Asm (71342C92; C, P, and T)
5	50-2141B	PT Series III Cylinder Asm (9-14)
5	50-2589B	ST Series III Cylinder Asm (9-14)